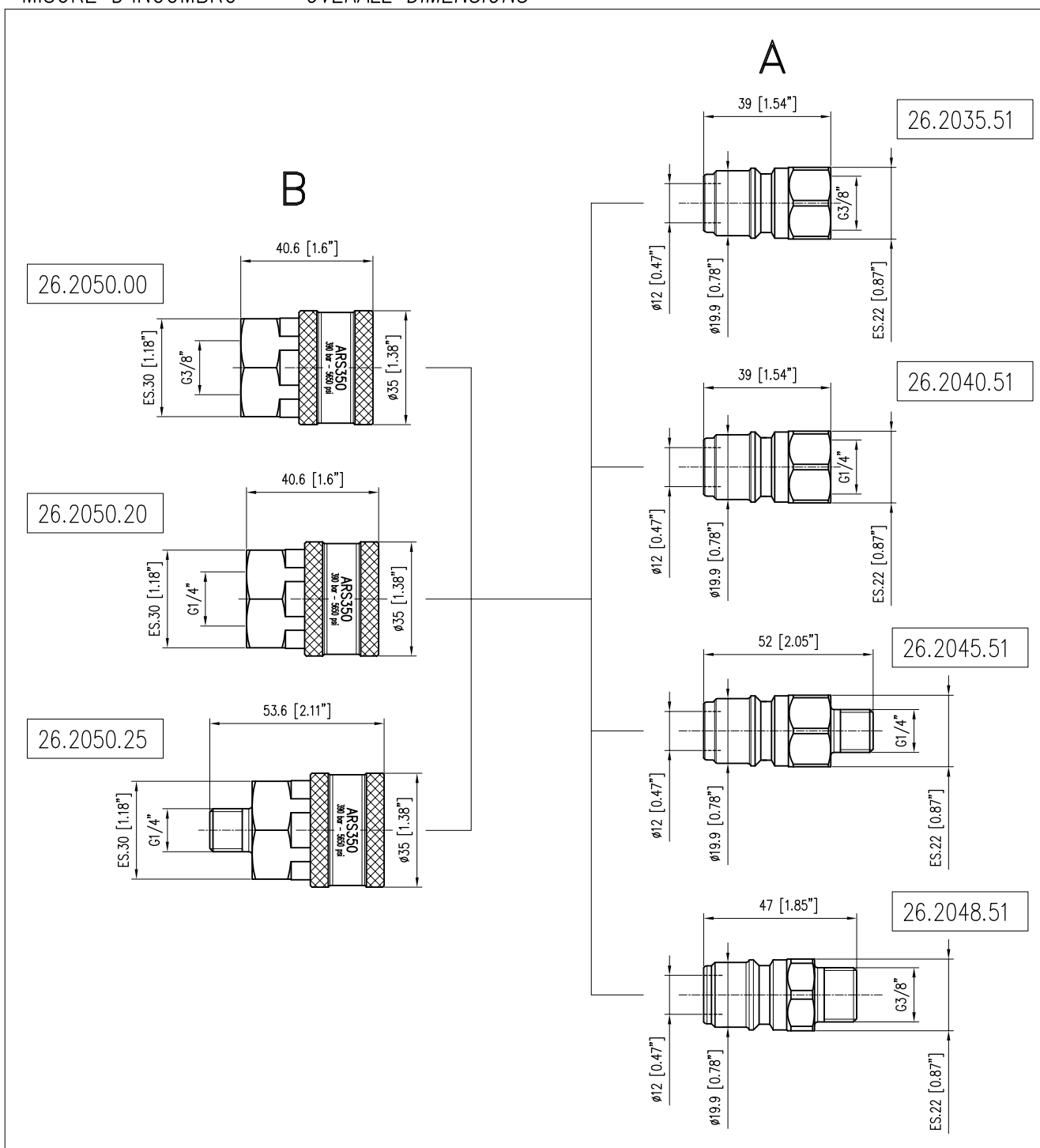


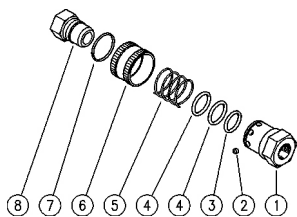
SPECIFICHE TECNICHE - SPECIFICATIONS

- PRESSIONE NOMINALE RATED PRESSURE	350 bar - 35 MPa (5100 psi)
- PRESSIONE CONSENTITA PERMISSIBLE PRESSURE	390 bar - 39 MPa (5650 psi)
- PORTATA MASSIMA MAX FLOW RATE	50 l/min (13.2 USG p.m.)
- TEMPERATURA MASSIMA MAX WORKING TEMPERATURE	90 °C (195 °F)
PERNO IN ACCIAIO INOX TEMPRATO E CORPO IN ACCIAIO INOX CON GUARNIZIONI OR IN VITON . PIN IN HARDENED STAINLESS STEEL AND BODY IN STAINLESS STEEL WITH VITON O RINGS .	

MISURE D'INGOMBRO - OVERALL DIMENSIONS



26.2035.51 ARS350 A nipplo a sfera, inox G3/8F
 26.2040.51 ARS350 A nipplo a sfera, inox G1/4F
 26.2045.51 ARS350 A nipplo a sfera, inox G1/4M

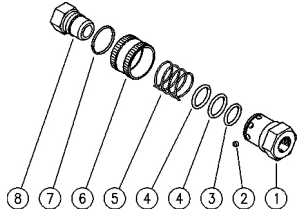


26.2050.00 ARS350 B att.rapido a sfera,inox G3/8F
 26.2050.20 ARS350 B att.rapido a sfera,inox G1/4 F
 26.2050.25 ARS350 B att.rapido a sfera,inox G1/4 M

Pos.	Codice	Descrizione	Q.tà	K1	K2	K3	K4	
1	26.2038.51	Corpo ARS350 G1/4F inox (1)	1					5
1	26.2037.51	Corpo ARS350 G1/4M inox (2)	1					5
1	26.2031.51	Corpo ARS350 G3/8F inox (3)	1					5
2	14.7410.10	Sfera 3/16" inox	8					10
3	10.3181.95	An.OR 2,62x17,96 mm Vi 70	1					10
4	10.3195.10	An.OR 2,5x20 mm Vi 70	2					10
5	26.2033.51	Molla 1,4x29,1x25 mm inox	1					10
6	26.2032.51	Ghiera ARS350 inox	1					5
7	26.2034.51	An. elast. 1,4x26 mm inox	1					3
8	26.2035.51	ARS350 A nipplo a sfera, inox G3/8F	1					25
8	26.2040.51	ARS350 A nipplo a sfera, inox G1/4F	1					25
8	26.2045.51	ARS350 A nipplo a sfera, inox G1/4M	1					25

(1) 26.2050.20 (2) 26.2050.25 (3) 26.2050.00

- 26.2035.51 ARS350 A ball-type nipple,sst,3/8F Bsp
- 26.2040.51 ARS350 A ball-type nipple,sst,1/4F Bsp
- 26.2045.51 ARS350 A ball-type nipple,sst,1/4M Bsp



- 26.2050.00 ARS350 B ball-type coupler,sst,3/8F Bsp
- 26.2050.20 ARS350 B ball-type coupler,sst,1/4 F Bsp
- 26.2050.25 ARS350 B ball-type coupler,sst,1/4 M Bsp

Pos.	P/N	Description	Q.ty	K1	K2	K3	K4	
1	26.2038.51	Housing -ARS350, 1/4F Bsp Sst. (1)	1					5
1	26.2037.51	Housing -ARS350, 1/4M Bsp Sst. (2)	1					5
1	26.2031.51	Housing -ARS350, 3/8F Bsp Sst. (3)	1					5
2	14.7410.10	Ball, 3/16" Sst.	8					10
3	10.3181.95	O-ring, 2,62x17,96 mm Vi 70	1					10
4	10.3195.10	O-ring, 2,5x20 mm Vi 70	2					10
5	26.2033.51	Spring, 1,4x29,1x25 mm Sst.	1					10
6	26.2032.51	Ring nut, ARS350 Sst.	1					5
7	26.2034.51	Snap ring, 1,4x26 mm Sst.	1					3
8	26.2035.51	ARS350 A ball-type nipple,sst,3/8F Bsp	1					25
8	26.2040.51	ARS350 A ball-type nipple,sst,1/4F Bsp	1					25
8	26.2045.51	ARS350 A ball-type nipple,sst,1/4M Bsp	1					25

(1) 26.2050.20 (2) 26.2050.25 (3) 26.2050.00



P.A. S.p.A.
Via Milano, 13
42048 Rubiera, Reggio Emilia - Italy
Tel +39.0522.623611
Fax +39.0522.629600
info@pa-etl.it

www.pa-etl.it



COMPANY WITH QUALITY MANAGEMENT
SYSTEM CERTIFIED BY DNV
= ISO 9001 =